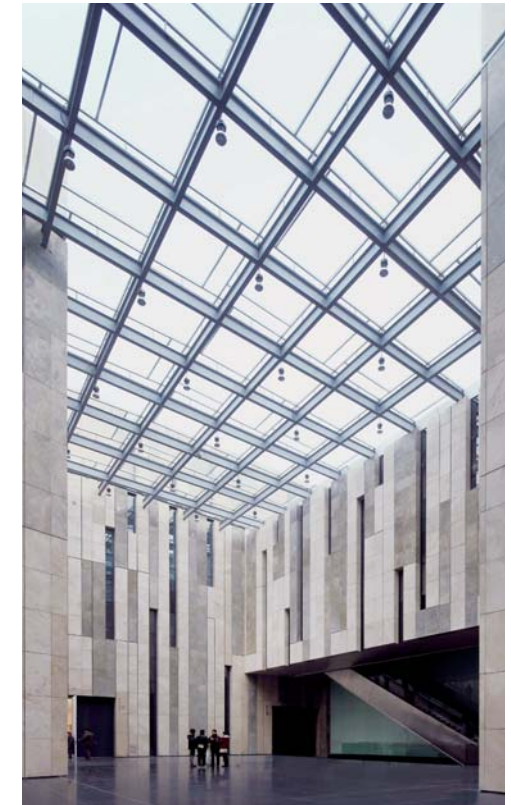
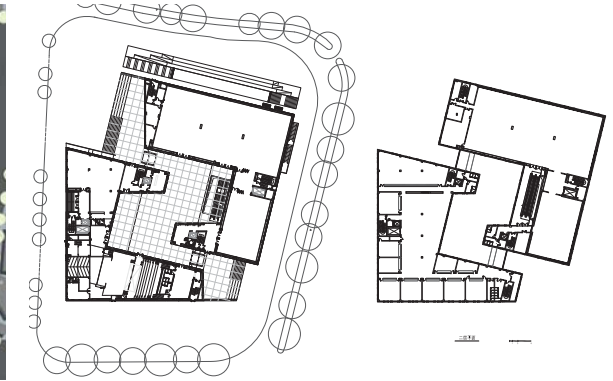
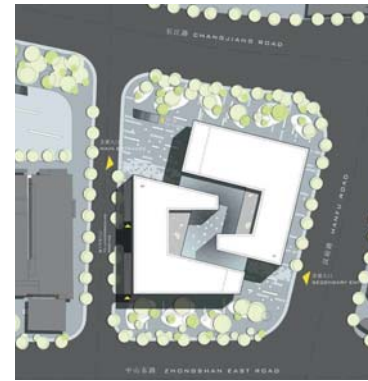


The new Art Museum in Nanjing, China lies to the south of the cultural axis that is Changjiang Road and north of the "revolution road" that is Zhongshan East Road. The two roads are at slight angles to each other, such that a trapeze-shaped plot of land emerges. In the northwest City Plaza extends as far as the Art Museum and affords a view of the former palace of Dr. Sun. In planning terms the Museum is a response to surroundings that are steeped in history: An edifice in the south – the Revolution Cube – adopts the direction of Zhongshan East Road, while that in the north, the Culture Cube, follows the course of Changjiang Road.

The space in between the two u-shaped interlaced structures at angles to each other takes the form of a canyon-like access area. The main entrance is located in the northwest and makes a point of facing City Plaza. A second entrance in the south delineates the other end of the canyon. On the top storey the quality of the office space, meeting rooms and classrooms is enhanced by roof terraces, which offer a view of the activities in the canyon.

Art Museum Jiangsu Province

client Nanjing Olympic Sport Center
 floor area 27,449 m²
 competition 07/2006, 1st prize
 completion 01/2010



Art Museum Jiangsu Province, Nanjing, China